

IKUFORM PE-UHMW

EXTRUDED PROFILES
PRECISELY MADE TO CUSTOMER REQUIREMENTS



TOP-LEVEL PLASTICS ENGINEERING

IKUFORM PE-UHMW

EXTRUDED PROFILES MADE TO CUSTOMER REQUIREMENTS

IKUFORM PE-UHMW (Polyethylene Ultra-High-Molecular-Weight) stands out for its **high resistance to wear**, its **exceptionally high notch impact strength values** and its chemical resistance, in particular with regard to common solvents. In contrast to other materials such as steel or POM, the coefficient of sliding friction of IKUFORM PE-UHMW, when used as a sliding partner, is very good. Thanks to its low tendency to stick/slip, the material – in addition to the properties described above – has vibration isolating and sound absorbing properties and is therefore extremely versatile.

We use RAM extrusion, a pressure sintering technique, to produce our profiles.

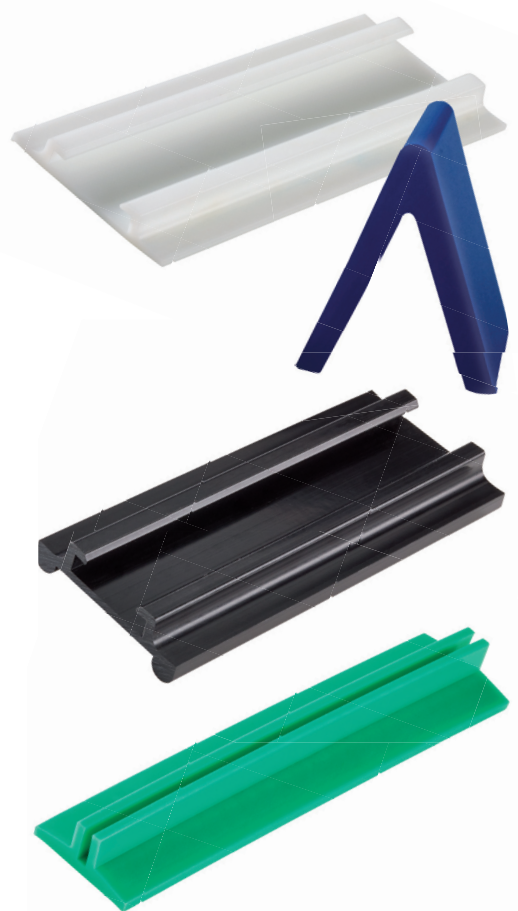
Application examples:

- Sliding rails for strap hinge and roller chains
- Guide rails and corner tracks
- Trolley wheels for belt-conveyors
- Wear profiles
- Scraper blades

We serve the following industries:

- Food & Beverage Industry
- Metering and Packaging Industry
- Logistics Industry
- Paper Industry
- Sawmill Industry
- Building and Construction Industry

etc.



Do you need **customized profiles, special compositions or other colour formulations?**

We are your competent partner: Do not hesitate to contact us concerning your individual project.

IKUFORM 
Part of the **GEHR®** Group

IKUFORM GmbH

In der Welsmicke 4
57399 Kirchhundem

Germany

Telefon: +49 - 27 64 - 26 137 0
Telefax: +49 - 27 64 - 26 137 90